

EX SERIES

FIBER CEMENT PANELS WITH CONCEALED CLIPS INSTALLATION

WELCOME TO

OUR WORLD



moland
- a natural choice



MODERN AND INNOVATIVE

Colours, surfaces, joints - create a unique look with future opportunities

EX series



UNLOCK YOUR VISION. UNLOCK THE POWER OF EX SERIES FIBER CEMENT

Commercial or residential? With EX series fiber cement the answer is yes. Our broad range of textures and colours combined with truly inspiring performance makes EX series a perfect match for whatever you are building next. Whether your next project is a traditional house, a trendy Italian restaurant or a multiple story house, it deserves to live up to your original vision. Discover EX series brand of performance and beauty.

PERFORMANCE COMES HOME WITH COMMERCIAL GRADE PRODUCTS

EX series fiber cement siding products have been earning their stripes in commercial settings for years. Fiber cement is a versatile, sustainable, high-performance product that makes as much sense for a home as it does for commercial building. You will be impressed with the many and varied looks of EX series products, and the performance will amaze you.

PERFORMANCE PRODUCES POSSIBILITIES

As versatile and attractive as it is durable, fiber cement has been earning its stripes for decades. The manufacturer Nichiha Corporation has taken all that is great about fiber cement and engineered it into a rain screen system that stands alone in the commercial construction universe. With the addition of our timesaving clip installation and drained and back-vented moisture management, EX series gives you the ability to unleash the power of fiber cement's unlimited possibilities.

DESCRIPTION

The EX panels are pre-finished using a durable multi-layer paint process and a NichiGuard™ stain resistant coating. Panels are tongue and groove profiled along top and bottom edges (long horizontal edges), and fit neatly together forming a waterproof joint. Vertical aligned joints are formed at the ends of the panels and are sealant filled.

QUALITY

Nichiha Corporation is a global manufacturing company with more than 13 plants scattered across 3 countries. Nichiha is committed to sustainable manufacturing of high quality and high performance facade solutions. EX series has been developed by Nichiha.

ADVANTAGES

EX series is easily integrated with other materials and is compatible with industry standard aluminium and timber framed windows and doors.

This external cladding system features a ventilated and drained cavity, which is a proven and highly effective method of weatherproofing buildings.

WHY CHOOSE EX SERIES

EX series has a wide product range and therefore, it gives the architect many options to construct an interesting facade. The quality of the EX series is high and provides good security for a maintenance-free facade, where the constructive function and aesthetic attractive surfaces last over time.



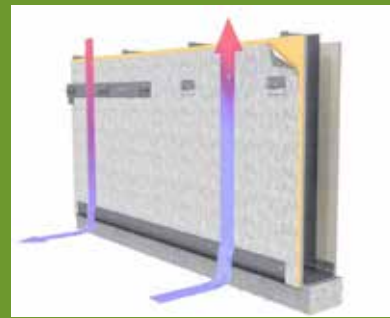
ADVANTAGES

EX series pre-finished walling system features include:

- » An ultra-modern contemporary appearance to deliver individual differentiation in building designs.
- » Pre-finished panels that speed up the construction process, reduce on-site labour, reduce supervision requirements and reduce trade coordination delays.
- » Pre-finished panels provide quality factory checked finishes to deliver higher customer satisfaction and reduce callbacks.
- » Extensive range of smooth, textured and profiled surface finishes in attractive colour tones to meet today's customer tastes.
- » Panels are protected with NichiGuard™ coating, which has an anti-staining, self-cleaning function. Silica particles in the NichiGuard™ coating attract water from the atmosphere to form a thin molecular film, so that airborne contaminants do not reach the panel surface itself. Rainwater that runs down the wall washes contaminants away.
- » Compatible with cost effective, industry standard lightweight timber and steel stud wall constructions.
- » Suitable for integration with industry standard window and door frames.
- » Has simple components and construction techniques to ensure fast and easy assembly.
- » Results in an attractive look.
- » External corners in matching structure and colours assist quick and easy installation and produce a high quality finish.
- » Special coloured extruded aluminium corners and H-profile.
- » Most designs can also be mounted vertical.



Drained and back-ventilated moisture management system.



STOCK GOODS

In stock, we have 9 different designs from the EX series, though it is possible to order and get other designs delivered.



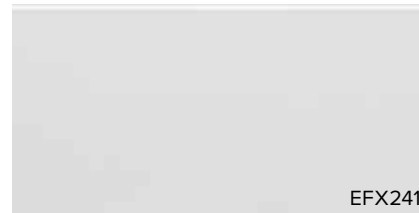
EJ495E

BillionBrick RoseGrey



EF432

ConcretePanel Grey



EFX241

FlatPanel White



EFX243

FlatPanel Mocca



EJ814E

I-Cube Onyx



EFA244

VintageWood CarbonBlack



EFA243

VintageWood BitterBrown



EFA241

VintageWood MediumBrown



EFA245

VintageWood WhiteAsh

Notice: The shown colour samples are instructive and may vary from the delivered materials.

A HIGH PERFORMANCE SOLUTION THROUGH AND THROUGH

With EX series panels, the possibilities are virtually limitless.

- » The widest offering of commercial rain screen styles.
- » Drained and back-ventilated moisture management system.
- » A highly engineered installation system that saves time and minimizes mistakes.
- » Concealed clips, fasteners provides a clean, uninterrupted appearance (No visible screws).
- » Quick and simple installation that contributes to a shorter construction schedule, shaving precious time off of most projects and lowering on the wall cost.
- » High Performance Panel: No rotting-No warping-No pest concerns-No delamination.
- » The clip fixing system reduces installed cost, as no special tools are needed to complete the installation.
- » Panels can be installed on all of the most common substrates: Traditional wood framing and metal frame construction.
- » Forget about moisture that get into the joints, dirt and insects, which gathers in traditional ventilated facade systems. EX series consists of tongue and groove cladding boards that are ready for installation.
- » The panels must be installed according to the instructions, to show off the ability.

PRODUCTDATA

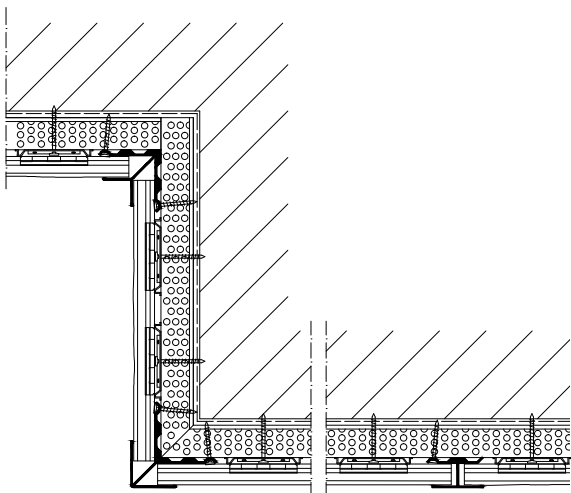
Product series:	EX series
Type:	Outdoor and indoor facade panels
Thickness:	16 mm
Size:	455 x 3030 mm
Stud frame:	Wood/steel
Weight/m ² :	19 - 20 kg
Fire classification:	B-s1, d0
Warranty:	10 years (For more information see our guarantee conditions)

QUICK AND SIMPLE INSTALLATION

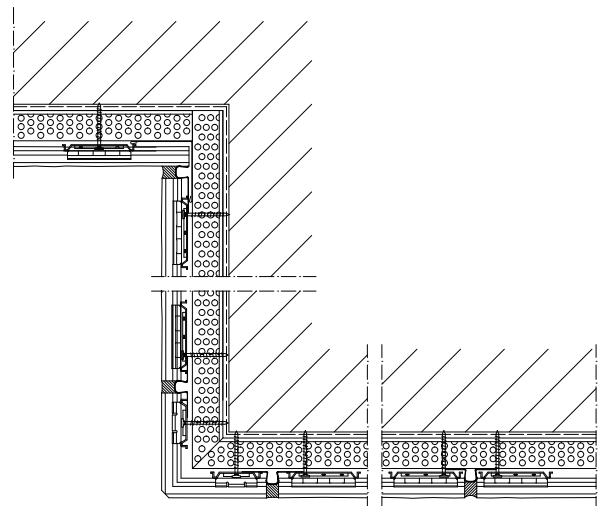
EX series guarantees a quick and simple installation that contributes to a shorter construction schedule, shaving precious time off of most projects and lowering on the wall cost.



EX series 16 x 455 x 3030 with a ventilated horizontal sub-construction and with traditional vertical wood or steel sub-construction.



Above shows mounting with special coloured extruded aluminium corners and H-profiles - an exclusive and easy fitted system.



Above shows mounting with traditional sealant assembly and prefabricated corners in matching structure and colour.



HBC

PART OF MOLAND GROUP

Moland Byggevarer A/S · Strandvejen 16 · DK-7800 Skive
www.moland-denmark.com · moland@moland.biz · Tlf.: +45 96 14 50 00